

New Energy Meter

LHE12C



Product Introduction

LHE12C is single phase multi-function External Open-type CT rail-mounted meter. LHE12C intended to measure grid parameters, e.g. active energy, reactive energy, voltage, current, power, power factor and frequency. The RS485 interface provides power monitoring data for inverters and other devices to realize fast response control. Standard DIN rail installation, with small size, easy to install.

Widely used in distributed photovoltaic, energy storage power station and other new energy field power data monitoring.

Product Highlights

◆ Safe Operation

RS485 is physically isolated from the high voltage terminals

◆ Fast Instantaneous Refresh

Support voltage, current, active power, reactive power, power factor and other instantaneous response of 100ms

◆ Communication Function

Supports RS485 communication port, supporting up to 38400 baud rate

◆ Module Expansion Interface

Support external communication module, can be used to expand Bluetooth, WiFi and other wireless communication module, wireless communication with inverter equipment

Main Functionalities

◆ Measurement

- Total import & export energy kWh
- Total import & export energy kvarh (optional)

◆ Instantaneous Values

- Voltage
- Current
- Frequency
- Power factor
- Power (active and reactive)

◆ Interface

- 1 RS485 port, protocol: Modbus-RTU
- Wireless module expansion interface (optional)

◆ LCD

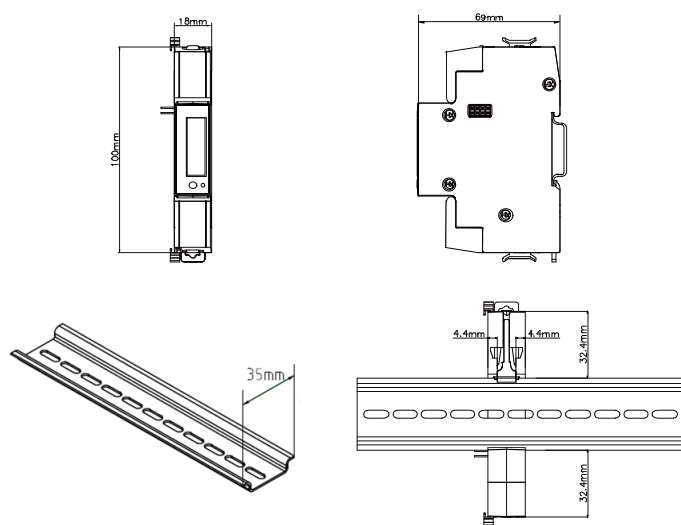
Backlight (optional)



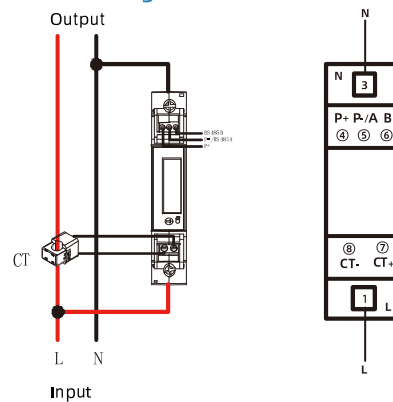
Specifications

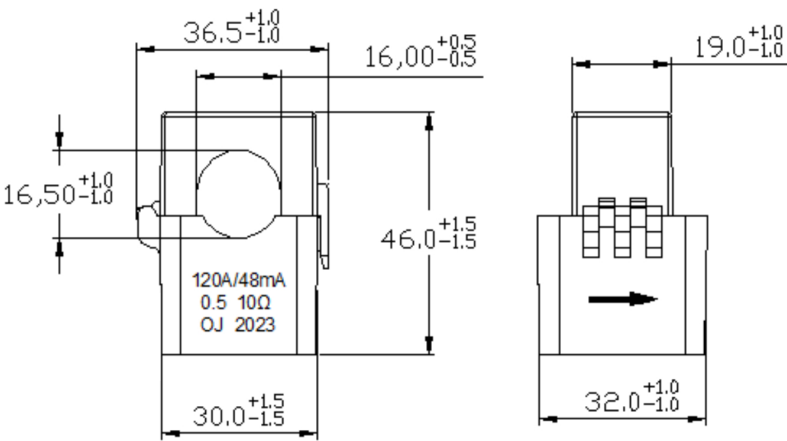
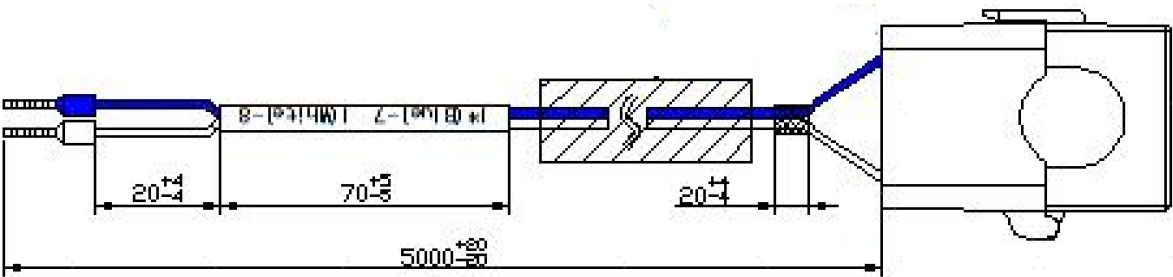
	Parameters
Connection	Single-phase two-wire(1P2W)
Voltage	Nominal voltage: 220V/230V/240V Operating voltage range: 70%Un~130%Un
Current	Open-type CT:100A/40mA;250A/50mA
Accuracy	Active energy: Class 1, Reactive energy: Class 2
Frequency	50Hz/60Hz
Temperature	Operation range:-25 C~+55 C Limit range for storage and transport:-40 C~+85 C
Humidity	Up to 95% non-condensing
Power Consumption in Voltage Circuit	≤2W,10VA
Power Consumption in Current Circuit	≤1VA
Communication Port	RS485 communication port,Modbus-RTU Protocol Baud rate:1200、2400、4800、9600、19200、38400 (configurable)
Dimension (HxWxD)	100mmx18mmx69mm
Certification	CE, MID, RoHS, RCM

Dimensions & Connection Diagram

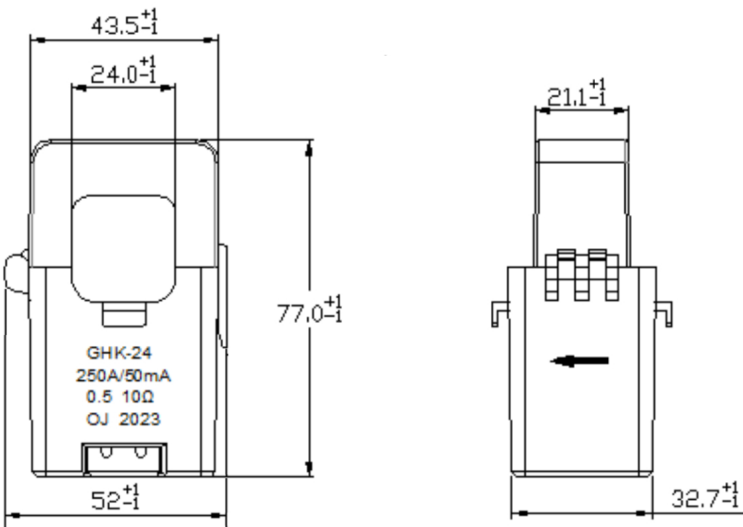


Connection Diagram





120A/48mA CT



250A/50mA CT