

New Energy Meter

LHE34C

Product Introduction

LHE34C is three phase multi-function external CT rail-mounted meter. LHE34C intended to measure grid parameters, e.g. active energy, reactive energy, voltage, current, power, power factor and frequency. The RS485 interface provides power monitoring data for inverters and other devices to realize fast response control. Standard DIN rail installation, with small size, easy to install.

Widely used in distributed photovoltaic, energy storage power station and other new energy field power data monitoring.



Product Highlights

◆ Convenient Wiring

Quick-plug terminals are used for RS485 and RJ45 external CT port

◆ Fast Instantaneous Refresh

Support voltage, current, active power, reactive power, power factor and other instantaneous response of 100ms

◆ Communication Function

Supports RS485 communication port, supporting up to 115200 baud rate

◆ Module Expansion Interface

Supports 12V 2.5W power supply, which can be used to expand wireless communication modules such as Bluetooth and WiFi to realize wireless communication with inverter devices

Main Functionalities

◆ Measurement

- Total import & export energy kWh
- Total import & export energy kvarh (optional)

◆ Instantaneous Values

- Voltage
- Current
- Frequency
- Power factor (total and each phase)
- Power (active and reactive total and each phase)

◆ Interface

- 1 RS485 port, protocol: Modbus-RTU
- Wireless module expansion interface (optional)

◆ LCD

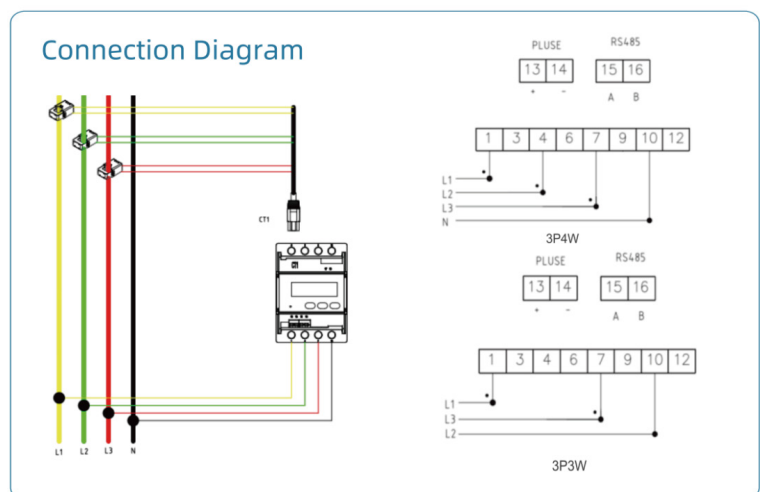
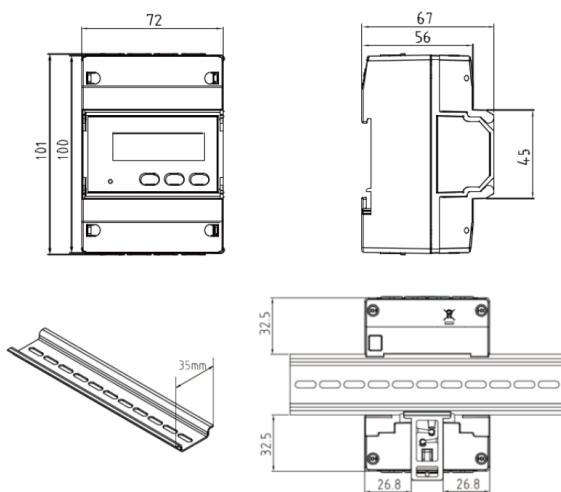
Backlight (optional)



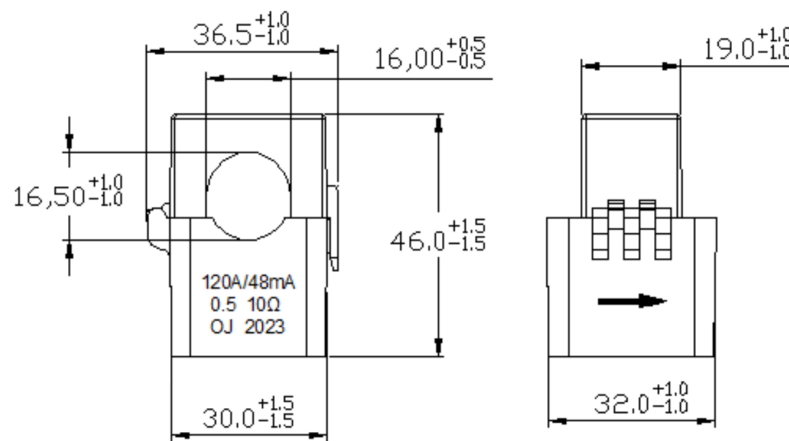
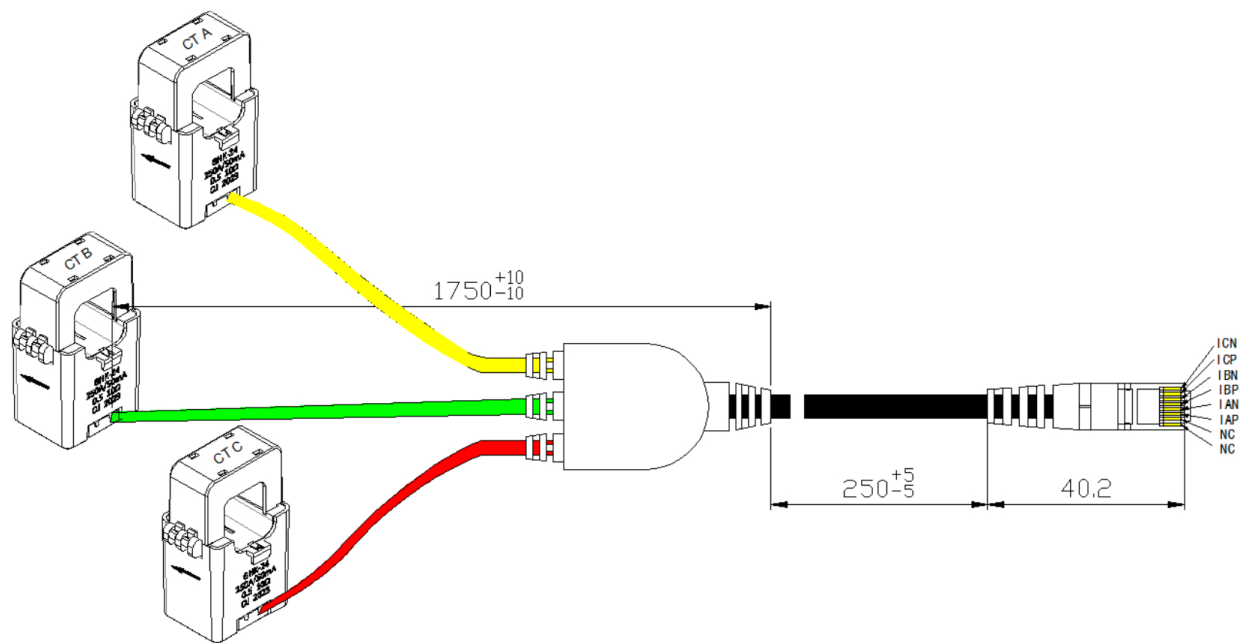
Specifications

	Parameters
Connection	Three-phase Four-wire (3P4W); Three-phase Three-wire (3P3W)
Voltage	Nominal Voltage: 3x120/210V, 3x230/400V, 3x240/415V Operating Voltage Range: 70%Un~130%Un
Current	Open-type CT: 120A/48mA; 250A/50mA Supports two three-phase loops
Accuracy	Active energy: Class 1, Reactive energy: Class 2
Frequency	50Hz/60Hz
Temperature	Operation range:-25 C ~+55 C Limit range for storage and transport:-40 C ~+85 C
Humidity	Up to 95% non-condensing
Power Consumption in Voltage Circuit	≤2W,10VA
Power Consumption in Current Circuit	≤1VA
Communication Port	RS485 communication port, Modbus-RTU Protocol Baud rate:1200、2400、4800、9600、19200、38400、115200(configurable)
Dimension (HxWxD)	101mmx72mmx67mm
Certification	CE, MID, RoHS

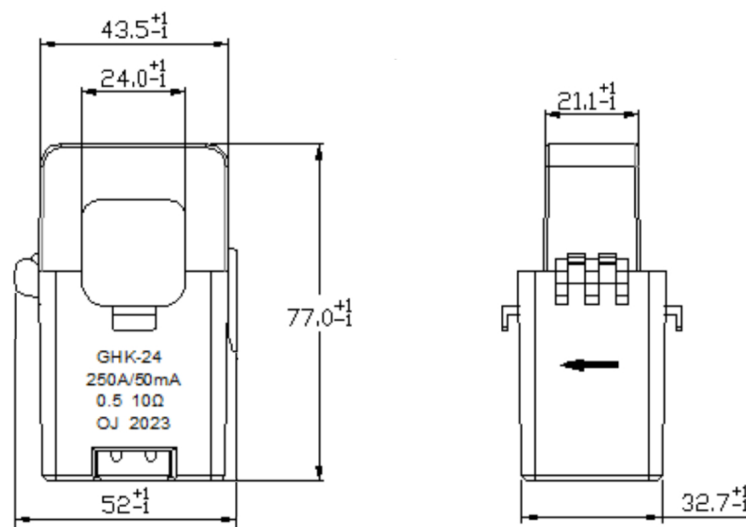
Dimensions & Connection Diagram



Open-type CT dimensions



120A/48mA CT



250A/50mA CT