

Quick Installation Guide

Residential Lithium Battery(BHF-S series)

I Preparation Tools



Drill (Bit Φ 10)



Screw Driver



Tap measure



Marker



Hexagon keys



Multi-meter



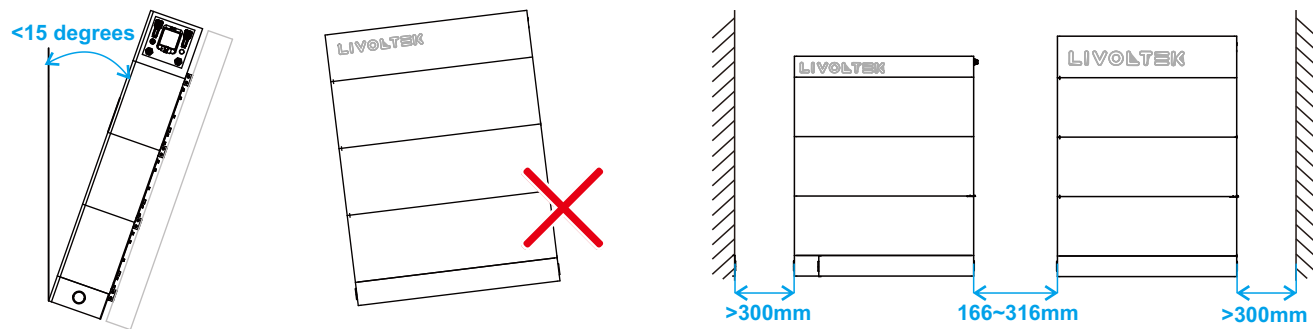
Utility knife



Safety Goggle

III Installation instructions

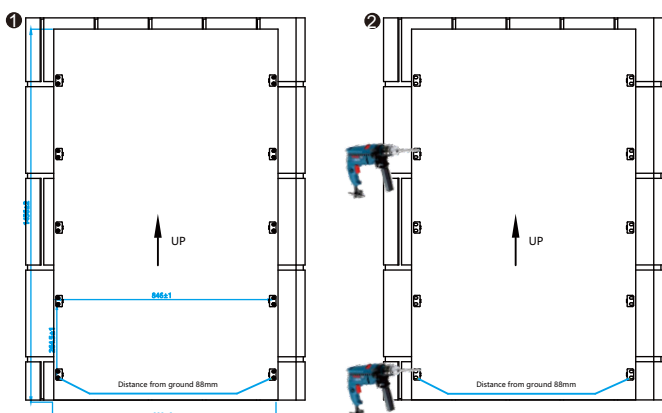
A Installation Requirements



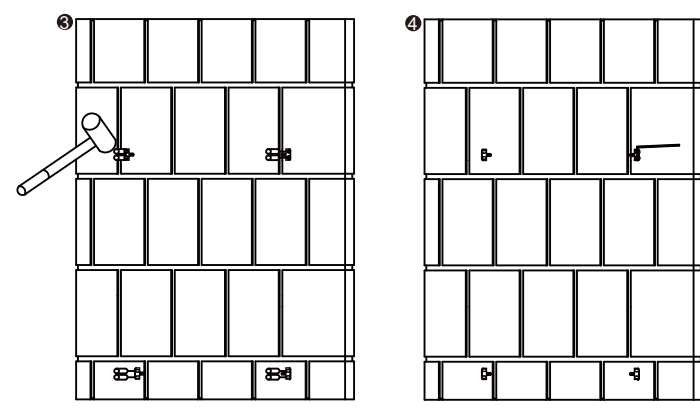
B Mounting

(Example of installing 3 battery packs)

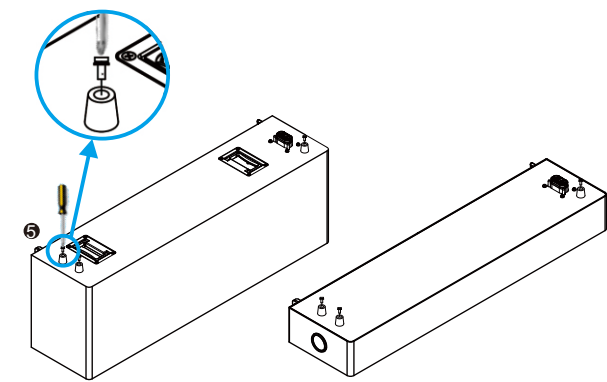
- Step1: Tape the perforating paper parallel to the wall
- Step2: Drill holes and then take perforating paper down.



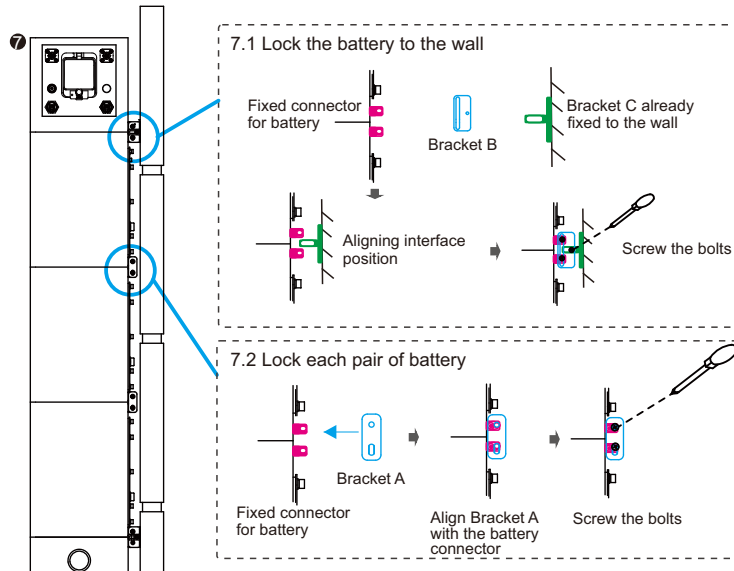
- Step3: Align the Wall-Mounting Bracket C to the hole first, then hammer the expansion anchor bolts into the holes.
- Step4: Screw the expansion bolts



- Step5: Screw the Locating Pin to the Battery and Mounting Base.

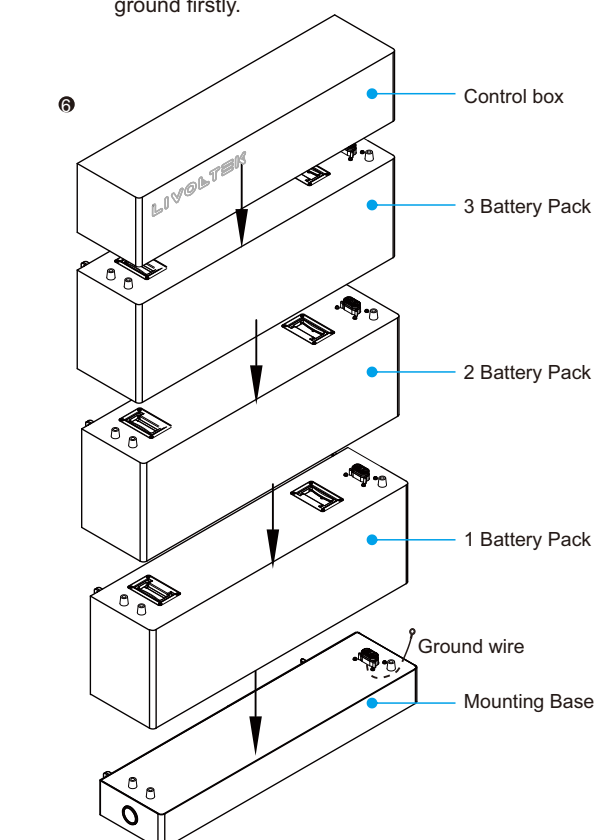


- Step7: Lock the bolts between bracket A, B, C and battery

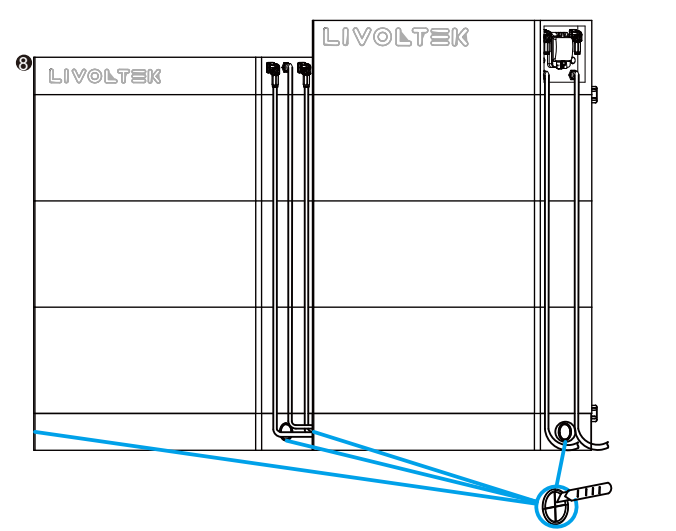


- Step6: Stack the Mounting base, Battery pack and Control box in turn

⚠ Notice: Connect Ground wire to the Mounting base and ground firstly.



- Step8 (optional): If more than 4 battery packs need to be installed, divide them into two columns.



Make the holes in the bottom, then connect power and communication cable correctly.

II Packing List

Battery Subassembly

| | | | | |
|------------|----------------------------|-----------------|----------------------|----------------|
| | | | | |
| Battery *1 | Wall-Mounting Bracket A *2 | Locating Pin *3 | Bolts for Bracket *4 | Certificate *1 |

Control Box & Mounting Base Subassembly

| | | | | |
|---------------------------|------------------------|----------------------------|------------------------|----------------------------|
| | | | | |
| Control Box *1 | Mounting Base *1 | Wall-Mounting Bracket C *4 | Pair of Power cable *1 | Wall-Mounting Bracket B *4 |
| | | | | |
| Locating Pin *3 | Bolts for Bracket *12 | | | |
| | | Perforating paper *1 | Safety Data Sheet *1 | User Manual *1 |
| Expansion anchor bolts *8 | Communication cable *1 | Perforating paper *1 | Safety Data Sheet *1 | User Manual *1 |

Subassembly of Tandem Optional Kit

| | | |
|-----------------------------|----------------------------|----------------------------|
| | | |
| Tandem optional kit *1 pair | Wall-Mounting Bracket C *4 | Wall-Mounting Bracket B *4 |
| | | |
| Locating Pin *3 | Bolts for Bracket *12 | |
| | | Perforating paper *1 |
| Expansion anchor bolts *8 | Expansion anchor bolts *8 | Perforating paper *1 |

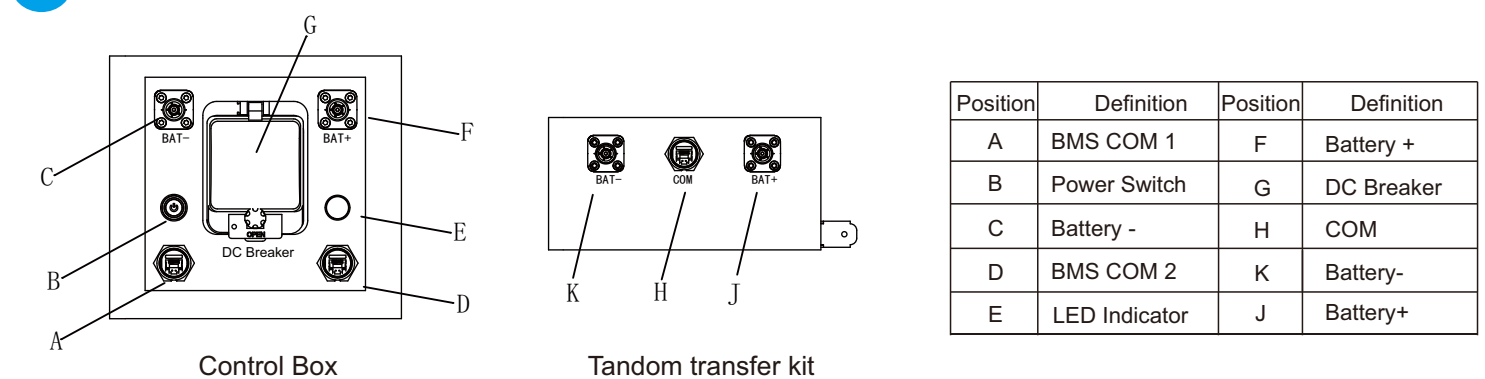
System Composition Lists

| Model | Battery subassembly | Control box & Mounting Base subassembly | Subassembly of Tandem optional kit |
|---------|---------------------|---|------------------------------------|
| BHF-S10 | 2 | 1 | 0 |
| BHF-S15 | 3 | 1 | 0 |
| BHF-S20 | 4 | 1 | 0 |
| BHF-S25 | 5 | 1 | 1 |
| BHF-S30 | 6 | 1 | 1 |

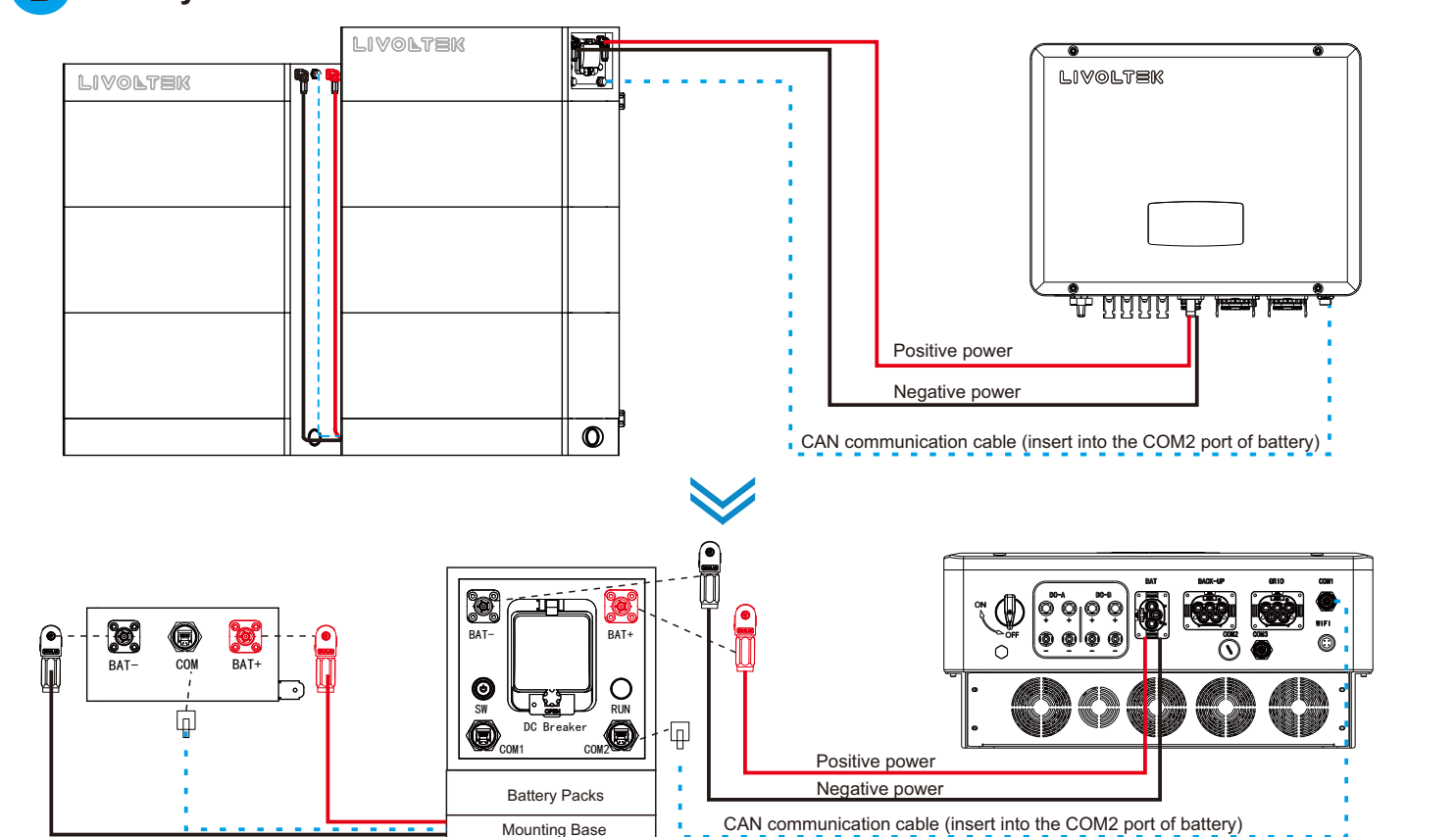
- ⚠ Notice:
- Please select the compound mode of accessory packages depending on the installation mode.
 - After receiving the battery, please check to make sure the packing and all components are not missing or damaged.

IV Connection and Operation

A Overview of the Connection Area



B Battery Connection



BMS Connector Pin Definition:

| | | | |
|--|---|--------------|-----------|
| | 1 | Orange/white | BMS_CAN_H |
| | 2 | Orange | BMS_CAN_L |
| | 3 | / | Reserved |
| | 4 | / | Reserved |
| | 5 | / | Reserved |
| | 6 | / | Reserved |
| | 7 | / | Reserved |
| | 8 | / | Reserved |

- ⚠ Notice:
- Before connecting the power cables, make sure the DC breaker of the battery is disconnected.
 - Cable colors are for differentiation only. Detailed information is subject to the actual product received by the user.

B Turn On/Off the Battery

