

Quick Installation Guide

Motion Compact DC WallBox



More product materials
please scan the QR code

Preparation Tools

Clamp current meter	Multimeter	Cross screwdriver	Straight screwdriver	Socket spanner	Stickers
Adjustable spanner	Torque spanner	Wire crimper	Diagonal pliers	Brush	
Wire stripper pliers	Claw hammer	Pneumatic drill	Knife	Heat gun	
Hydraulic press	Zip ties	Heat shrink sleeves	Insulating tape	Cotton	

Packing Lists

There are two kinds of DC charging station: single-gun and double-gun charging station. And there are wall-mounted and pillar versions in accordance with different installation methods. The accessories of DC charging stations differ.

Wall-mounted DC charging station

Double-gun DC charging station*1 pc	Charger bracket*1pc	Wall hanging accessories*4 pcs	M6*16 screws*2 pcs	M10*80 expansion bolts*4 pcs
Φ6*28 expansion tubes*6 pcs	ST3.9*30 self-tapping screws*6 pcs	Charging gun holder brackets*2 pcs	Charging gun holders*2 pcs	M5*12 screws*2 pcs
Key*2 pcs	Hand shanks*2 pcs	Certification of Conformity*1 pc		

* Note: for the wall-mounted single-gun DC charging station, the number of expansion tubes, self-tapping screws, charging gun holder bracket, charging gun holder and M5*12 screw should be 3 pcs, 3 pcs, 1 pc, 1 pc, 1 pc respectively.

Pole DC charging station

• DC charging station

Double-gun DC charging station*1 pc	Key*2 pcs	Hand shanks*2 pcs	Certification of Conformity*1 pc

• Pole of DC charging station

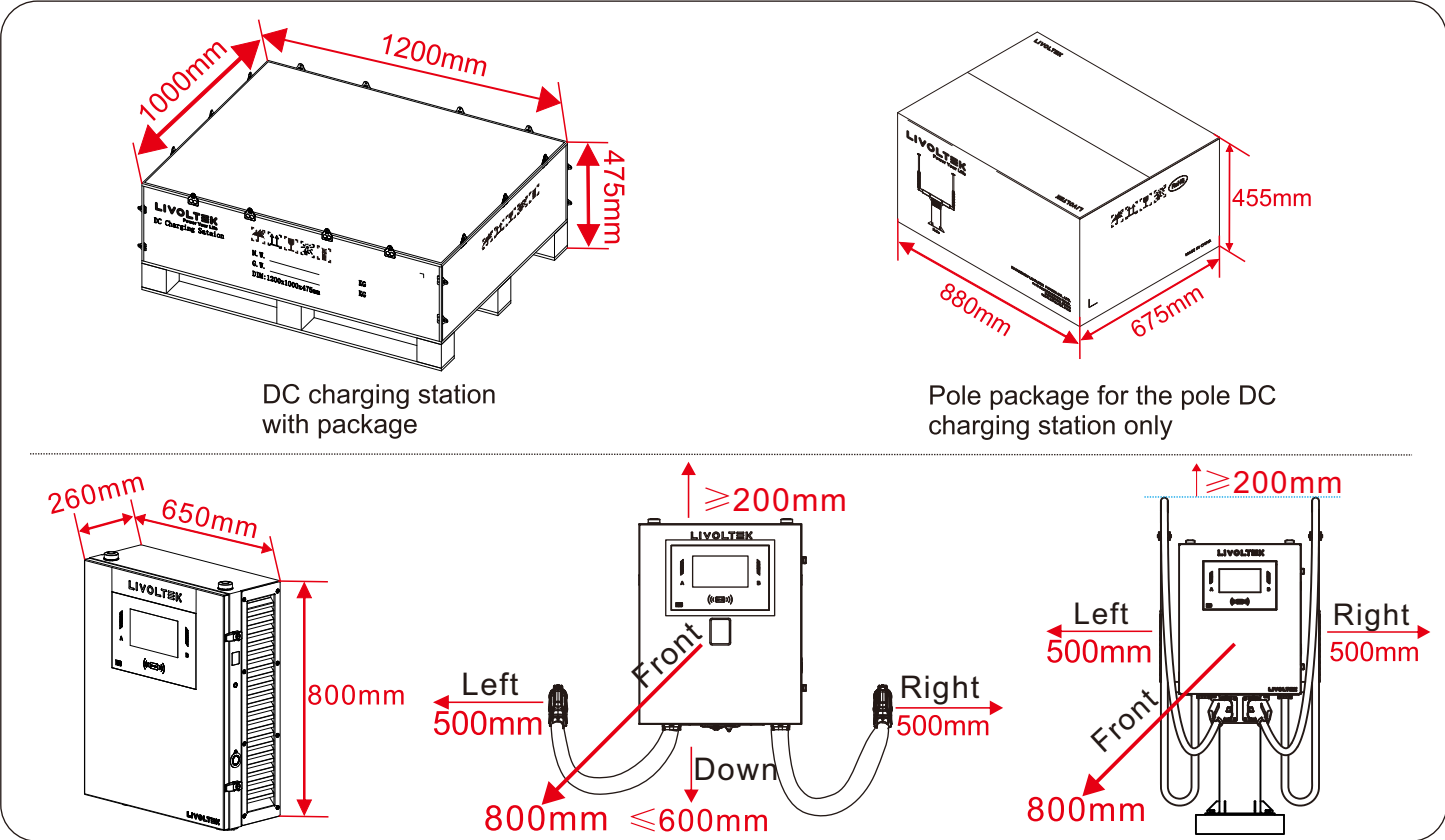
Pole*1 pc	Springs*2 pcs	Spring fittings*2 pcs	M16*100*4 pcs	M12*25*6 pcs	Certification of Conformity*1 pc

* Note: for the pole single-gun DC charger station, there is a different pole and the number of spring and spring fitting should be 1 pc and 1 pc respectively.

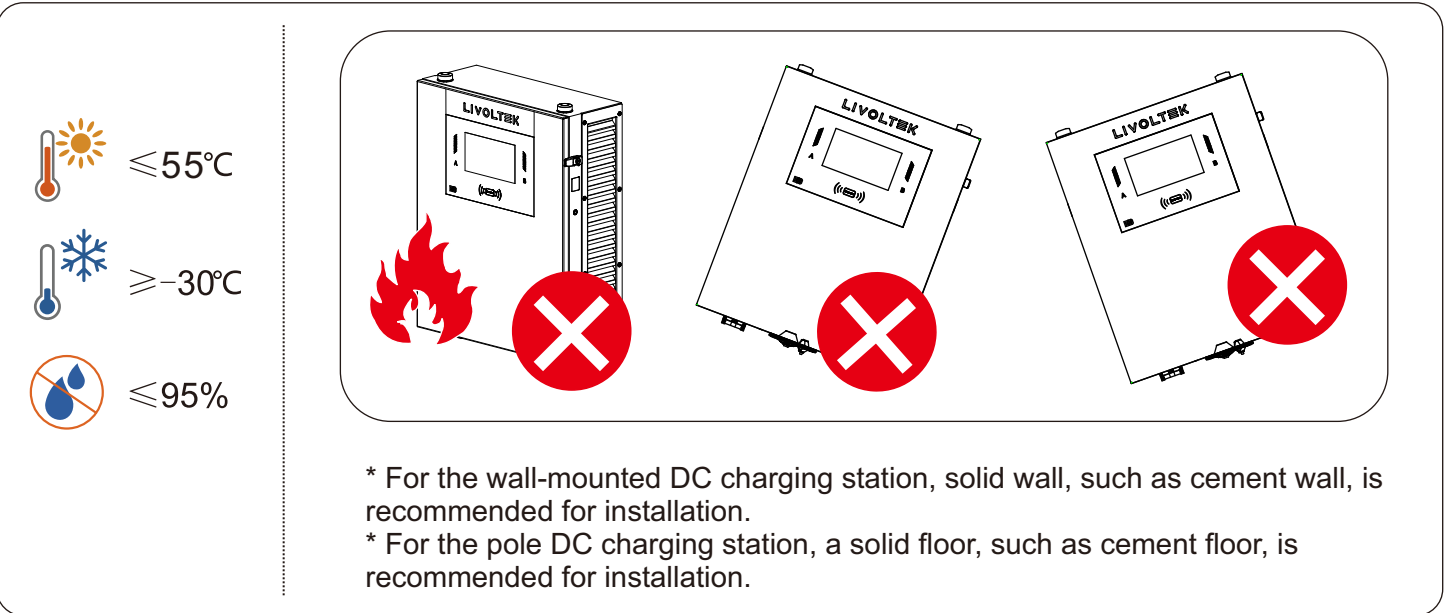
Mounting Place

Dimensions of the Package and the Device

For the wall-mounted DC charging station, the height of the bottom of the device perpendicular to the ground should be more than 600 mm. For the pole DC charging station, the device is installed on the pillar.

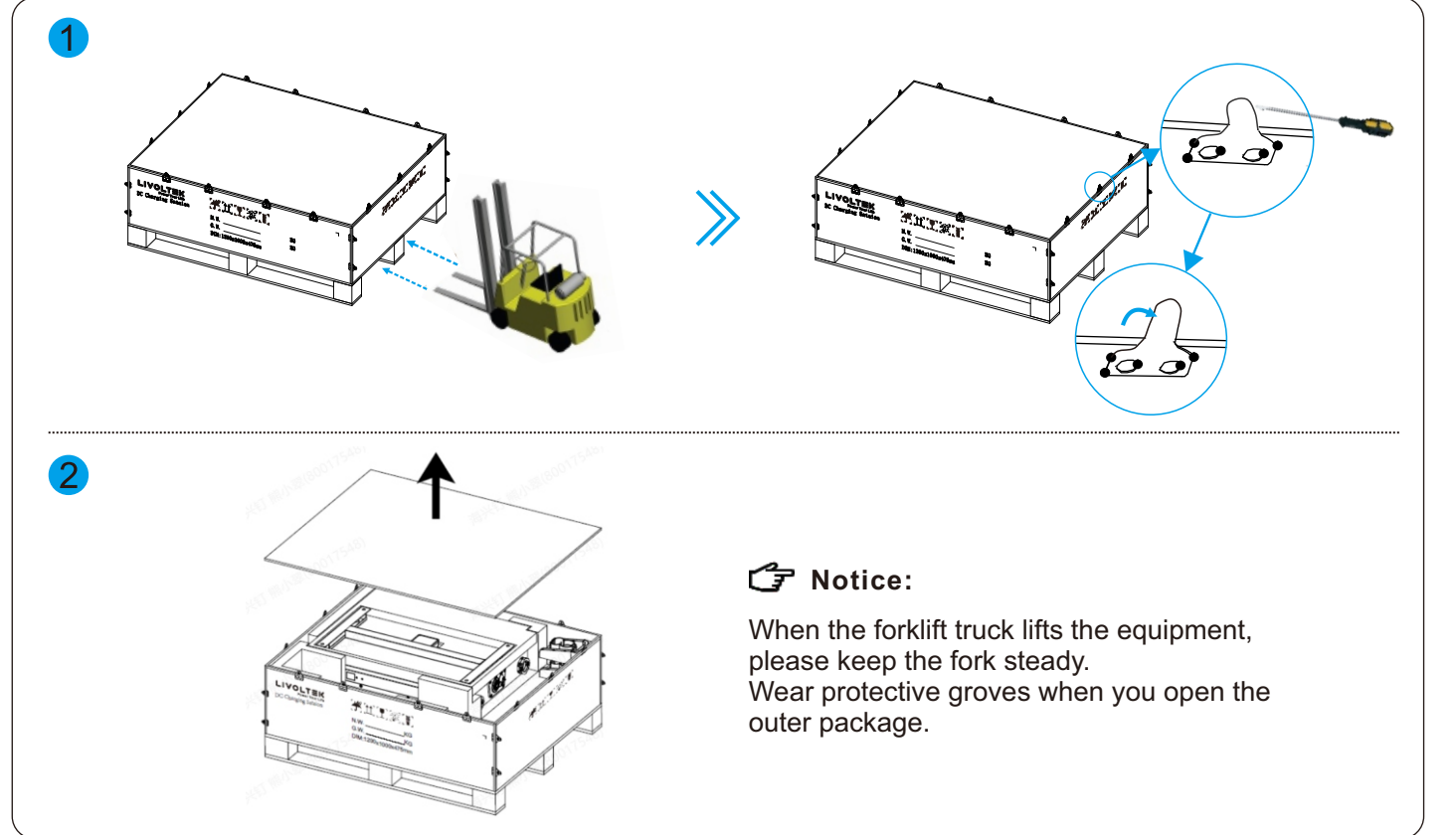


Installation Environment and Angle Requirement

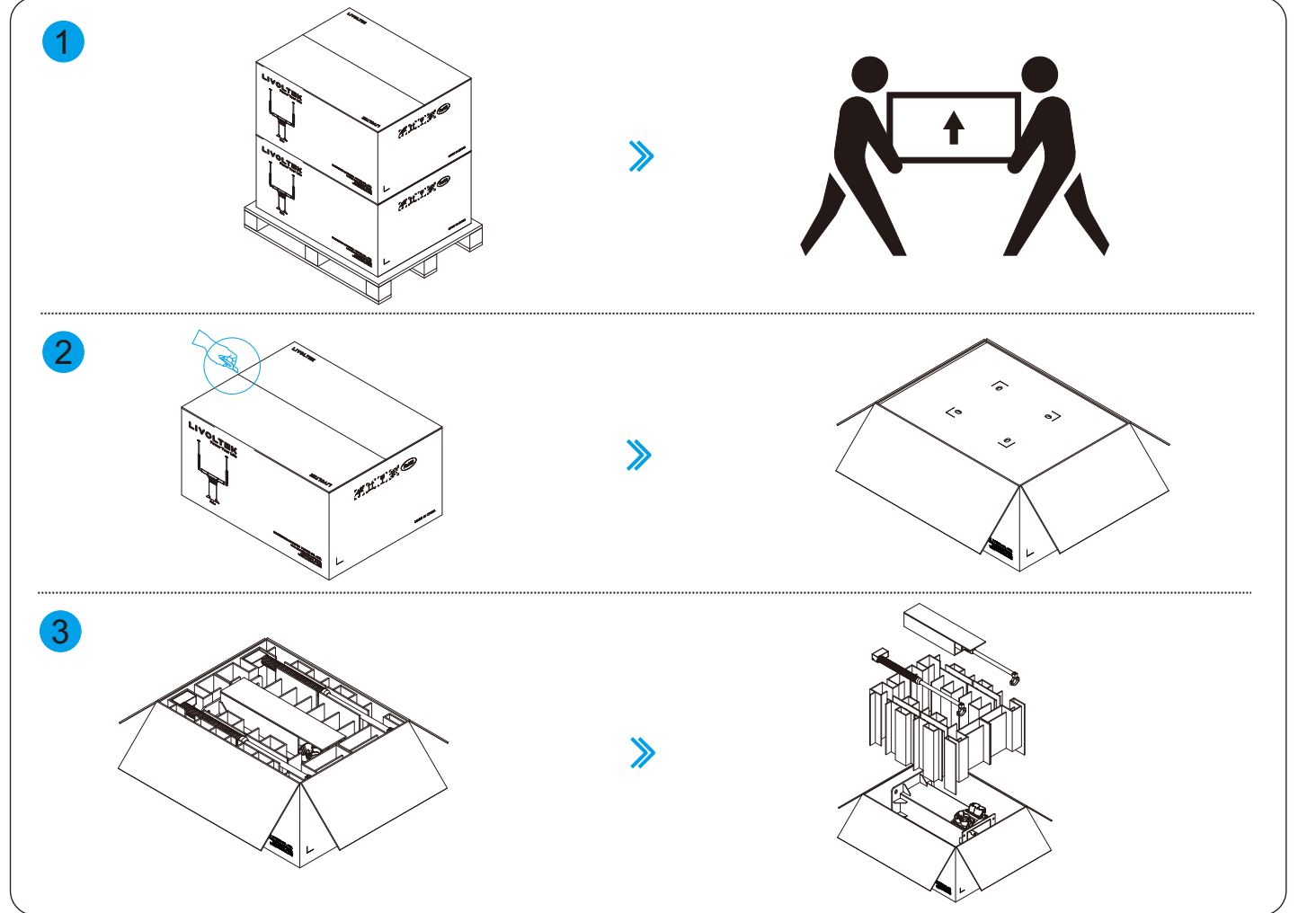


Movement and Unpacking

Step 1: Move the device with the package to the installation site with a forklift. Two people are recommended to carry the device and put the device on the ground. For the pole DC charging station, there are a device package and a pole package.
Step 2: Open the package with a utility knife and take the device and its accessories out.



Here below is the pole package of the pole DC charging station.



Wall-mounted DC charging station procedure

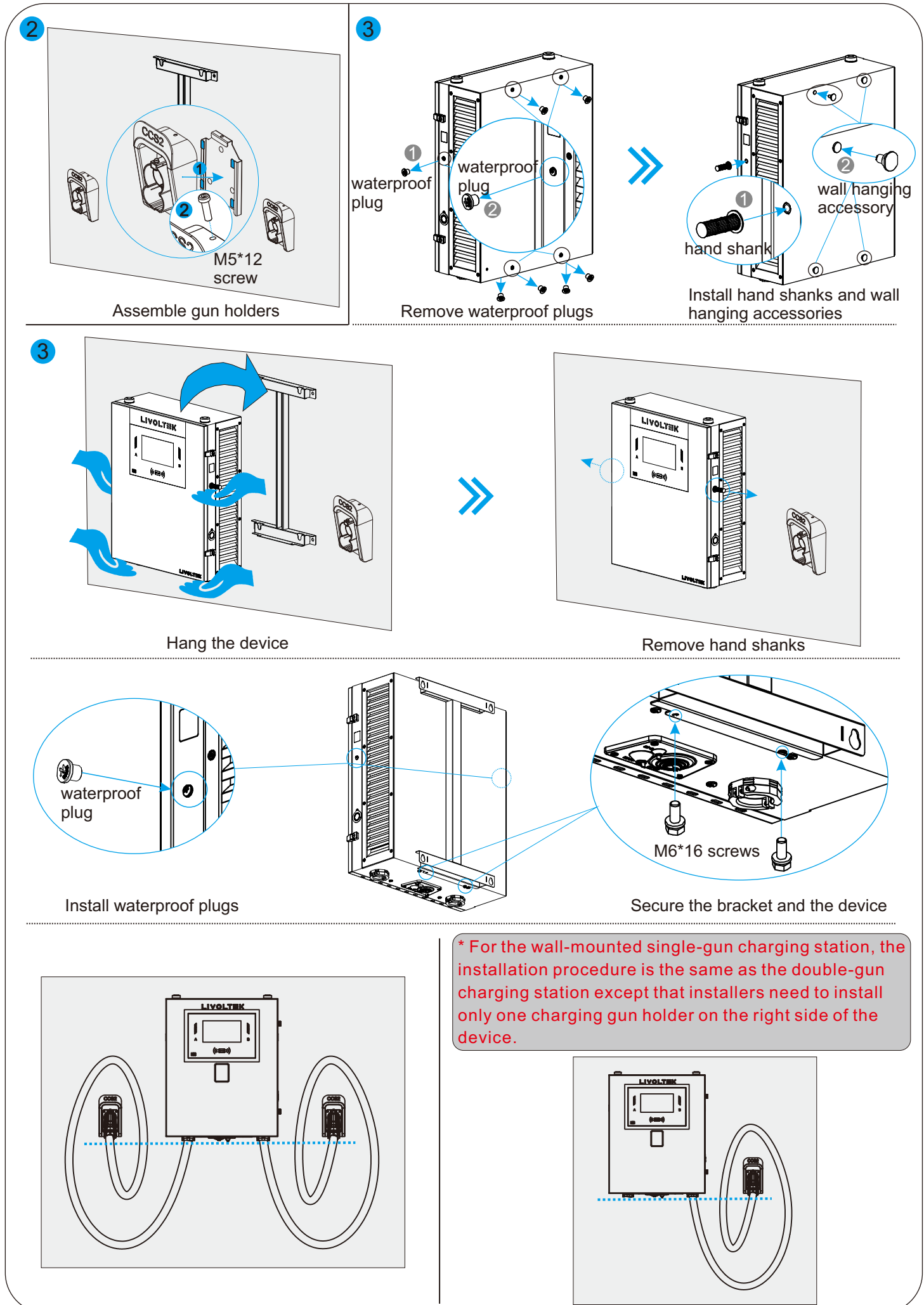
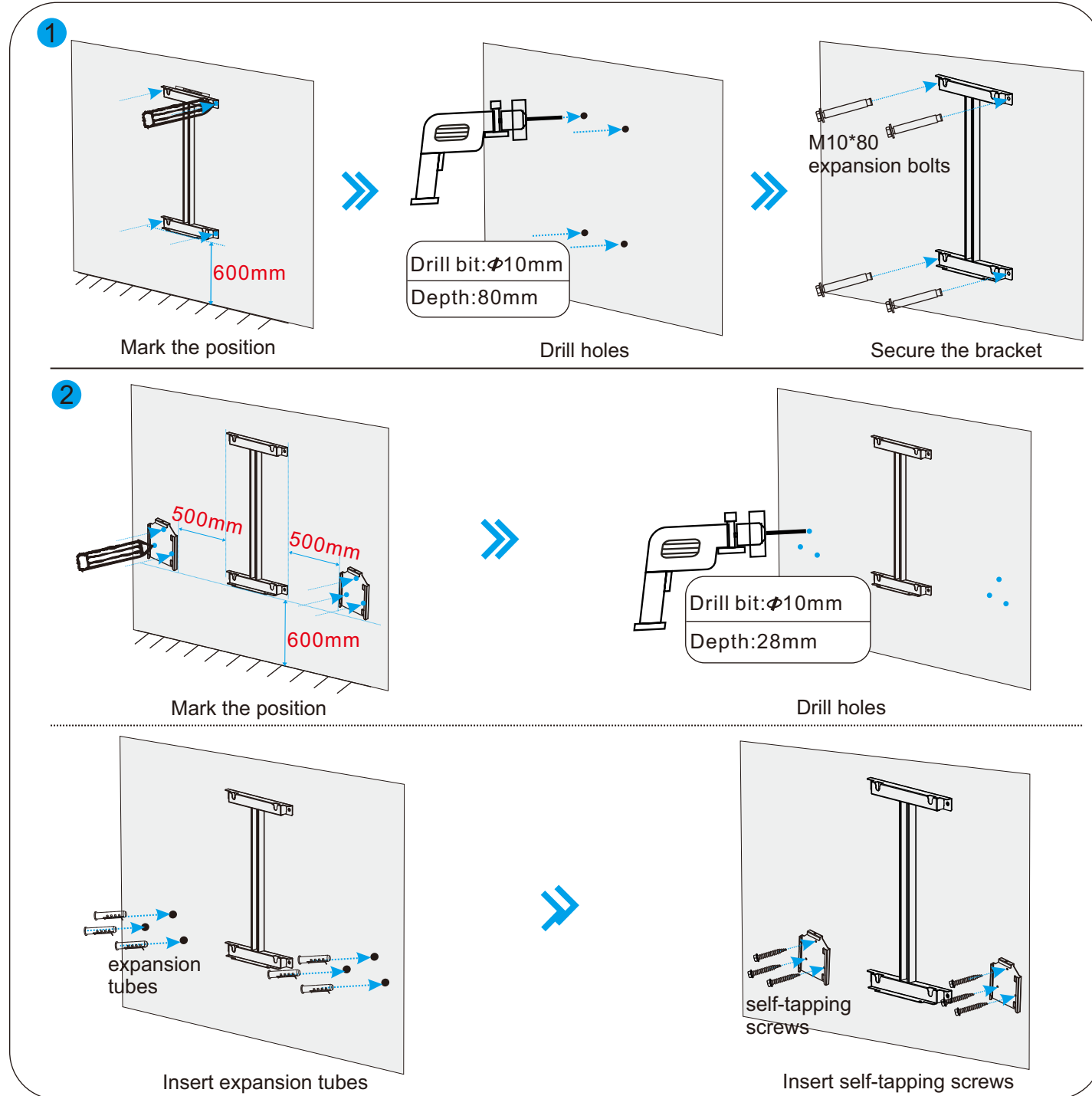
Here below a wall-mounted double-gun DC charging station installation procedure is taken for an example. Please notice that the number of some accessories of single-gun DC charging station and its installation details vary.

Before installation, take out the accessories from the device package, check and confirm the types and the number of accessories is complete and correct in accordance with the **Packing Lists** of the device bought.

Step 1: Put the charger bracket on the wall, 600 mm perpendicular to the ground and put a spirit level on the top of the bracket to ensure it's level. Mark the position of the charger bracket. Drill holes at the depth of 80 mm. Insert M10*80 expansion bolts through the bracket into the wall, knock the bolts and secure them with a torque wrench.

Step 2: Put the two charging gun holder brackets on two sides of the charger bracket, 600 mm perpendicular to the ground and 500 mm horizontal to the charger bracket. Mark the positions of the two charging gun holder brackets. Drill holes at the depth of 28 mm. Knock the expansion tubes into the wall. Align the holder brackets with the expansion tubes on the wall and insert the self-tapping screws through the brackets into the wall. Knock the screws and secure them with a torque wrench. Assemble the charging gun holders with the installed holder brackets on the wall and fix the holder and the bracket with a M5*12 screws.

Step 3: Remove eight waterproof plugs on both sides of the device, two at the bottom and four plugs at the back of the device. Install the hand shanks on both sides of the charging station, two M6*16 screws at the bottom and four wall hanging accessories at the back of the device. Hang the device on the charger bracket by two people. Then put the charging gun on the holder.



Pole DC charging station procedure

Here below a pole double-gun DC charging station installation procedure is taken for an example. Please notice that the number of some accessories of single-gun DC charging station and its installation details vary.

Before installation, take out the accessories from the device and the pole packages, check and confirm the types and the number of accessories is complete and correct in accordance with the **Packing Lists** of the device bought.

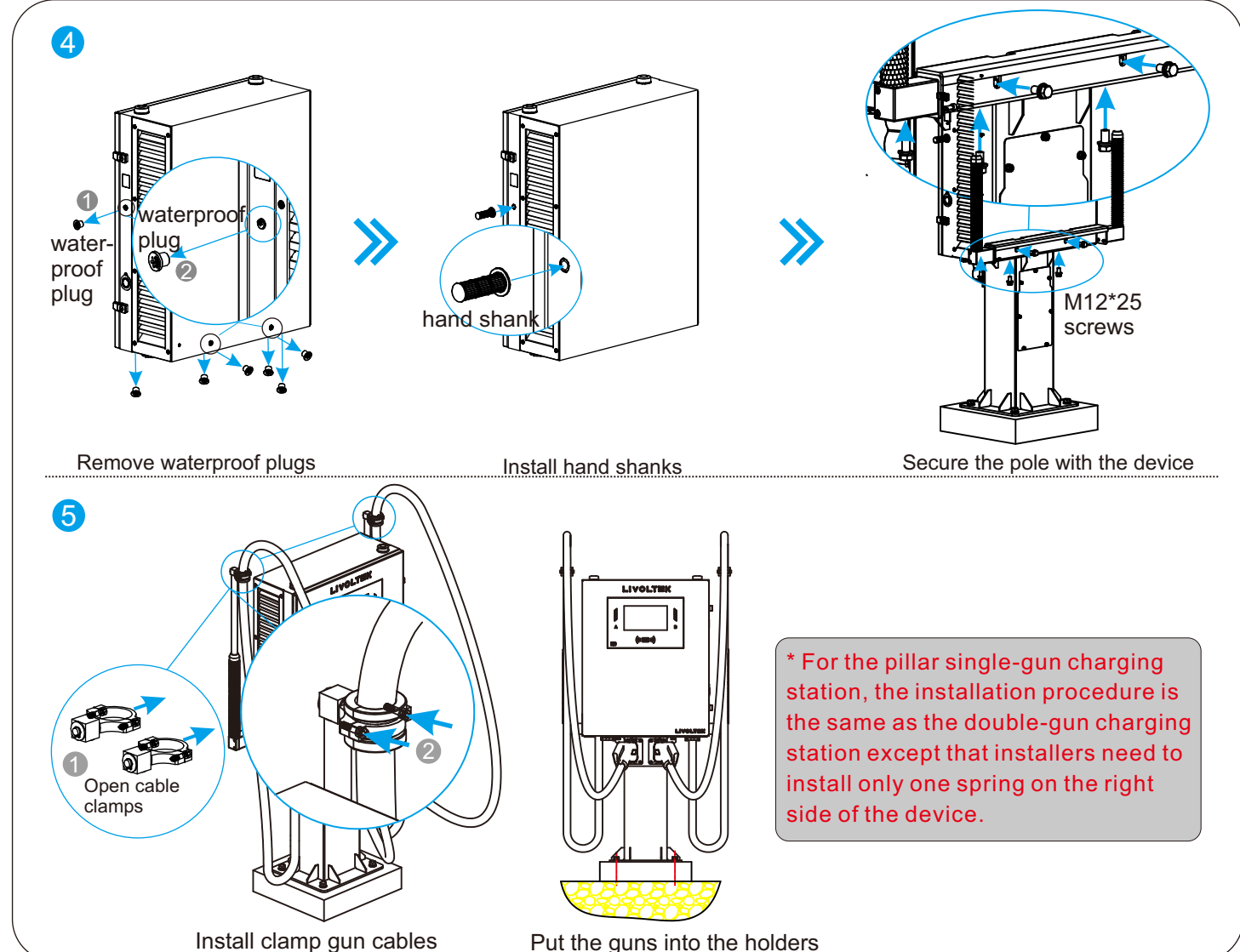
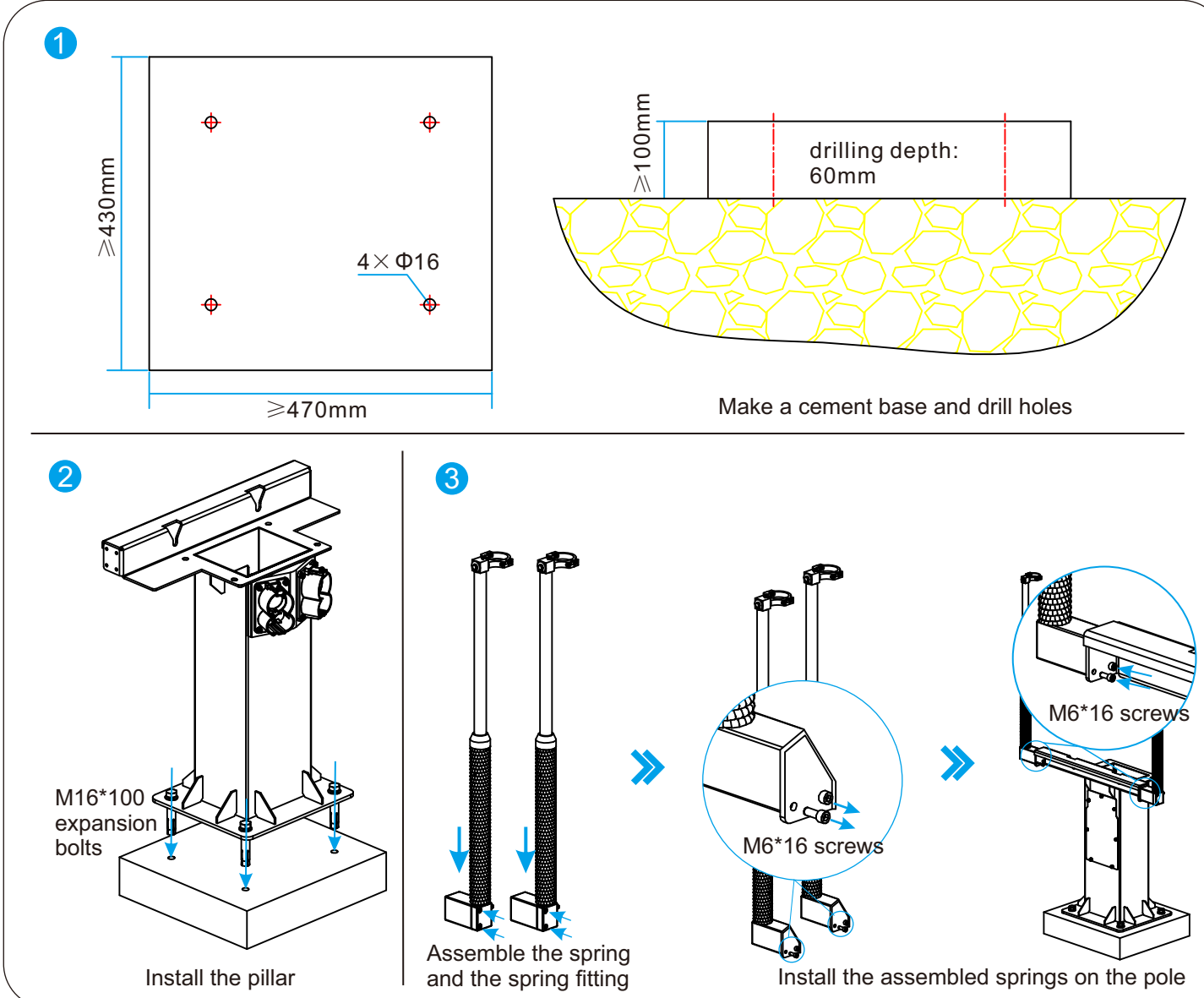
Step 1: Make a cement base, larger than 470*430*100mm (L*W*H), put the pole on the base, mark the position and drill the holes at the depth of 60 mm with a Φ16 drill bit.

Step 2: Align the pole with the holes on the base, insert the M16*100 expansion bolts through the bottom of the pole into the base, knock and secure the bolts with a torque wrench.

Step 3: Loosen the screws, assemble the springs with the spring fittings and tighten the screws. Loosen the M6*16 screws in the spring fittings, insert the screws through the ears on both sides of the pole into the spring fittings and secure the screws to assemble the springs and the pole.

Step 4: Remove the eight waterproof plugs on both sides, at the bottom and back of the device, install hand shanks on both sides of the device. Carry and hang the device on the pole and secure the device and the pole with two M12*25 screws at the back and four the bottom of the device. Remove hand shanks and insert waterproof plugs back to both sides of the device.

Step 5: Loosen the M6*16 screws and open the cable clamps on the top of the springs, put the gun cables in the clamps, adjust the cable length, lock the clamps with M6*16 screws and put the gun into the gun holders.



Additionally required material

Power	15&20&30kW	40&60kW
Copper five-core wire	5 AWG	2 AWG
Terminal	SC16-8	SC35-8

Step 1: Use the key to open the door.

Note: Before installation and wiring, ensure the device is free from electricity.

Step 2: Cut the inlet at the bottom of the device. Insert the cable into the device, strip 180 mm layer off the cable, cut 80 mm off L1/L2/L3 cables and strip L1/L2/L3/N/PE cable and crimp terminals. Connect assembled L1/L2/L3/N/PE cables to the device.

Step 3: Make sure the other side of the PE cable is connected to the ground.

Step 4: After all cables are firmly and correctly connected, close the door of the cabinet and the device and lock it.

