

INSTALLER USER MANUAL

TIPS: Please note that only end-users can register your app account by mobile phone, installers please register by Website.

Web link1: <https://evs.livoltek-portal.com/#/>

For Europe, Middle East Regions, Africa

Web link2: <https://www.livoltek-portal.com/#/>

For Asia, Latin American, Australia and others

1. Download APP

Download "My Livoltek" app

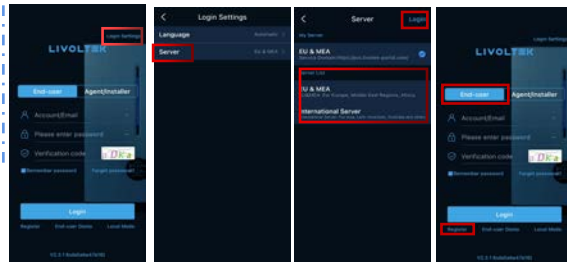
The app is available on Google Play Store(Android) and App Store(Apple)



2.Registration by web & Use by App

STEP 1

Open Web to registration
Tips: Installers need to register on the web, then can use the APP.

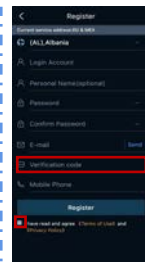


STEP 2

Complete the registration information

Tips:

- 1)If you do not receive the verification code within 2 minutes, in you inbox email, please check your junk email
- 2)Make sure you have selected the "I have read and agree".



STEP 3

Succeed



3.Create a site

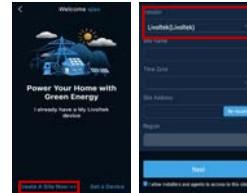
STEP 1

Open 'My Livoltek' app
Enter your account,password and verification code.Then click 'login'.



STEP 2

- 1)Click "Create A Site Now",If you are logging in for the first time
- 2)Enter your site information



STEP 3

Choose your system type (Mandatory) and PV capacity (Mandatory) and PV type(Optional) and PV Arrange (Optional)



STEP 4

Set time-of-use tariff of your site.

Tips:

Please fill in the tariff setting



STEP 5

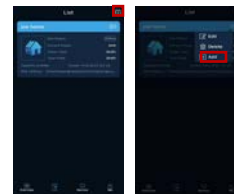
- 1)Choose end user's registration region
- 2)Put in end user's account name in owner box



4.Add your device

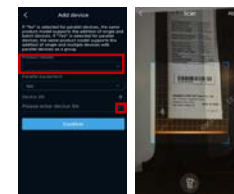
STEP 6

Add your device
Click ,then click 'Add'



STEP 7

Choose device model
Click to scan SN number on your device



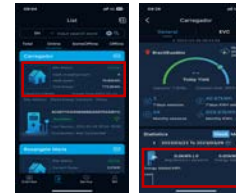
STEP 8

Successful



5. Usage details

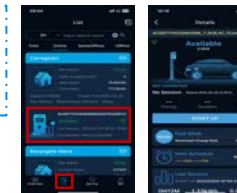
In this screen you will find the following information about the site



Press Overview, you will find daily yield, current power, monthly revenue, total yield, total revenue and self-use ratio of all your sites.



In this screen you can find charger working status. Touch charger's icons charger page, you can check details of the charger.



6. Bluetooth mode

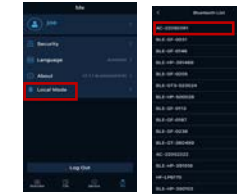
STEP 1

You could click "Local Mode" to test "Bluetooth"



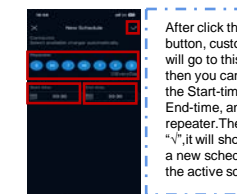
STEP 2

Click the "Bluetooth Mode"



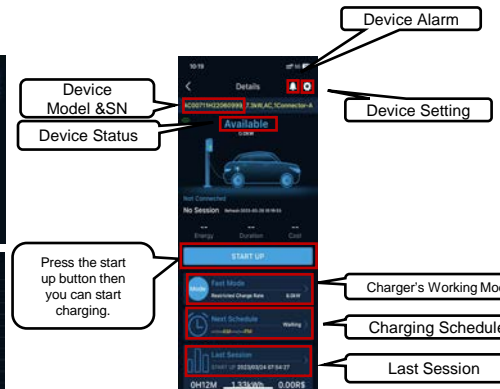
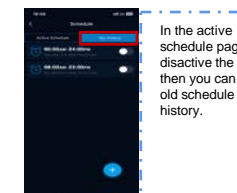
STEP 3

Find your Device 's SN number, and click it.



STEP 4

Successful and check inverter's information



For working mode , customer should choose one of them. We have Fast Mode, Dynamic Mode and Eco Mode for customer.



After click the "+" button, customer will go to this page, then you can set the Start-time and End-time, and the repeater.Then click "v",it will show you a new schedule in the active schedule.



Click the Sessions and you will go to this page. It will show you the history record of the charger.



For Schedule, there are two parts, one is Active Schedule, The other one is My History. Generally, we will active one schedule, or we need to add new one.



In the active schedule page, if we deactivate the schedule, then you can find the old schedule in My history.



After you set the mode and Schedule, then you can press START UP to start charging.

7. Wi-Fi connect

Step 1: Login in with your account.

Step 2: Go the 'Me' page and click the Local Mode.

Step 3: Click Bluetooth Mode.

Step 4: Choose the Bluetooth of your charger.

Step 5: Use the password of bluetooth to pair with charger, and click the setting icon.

Step 6: Click the Network Configuration.

Step 7: Input your Wi-Fi name and Password and click confirm button.

